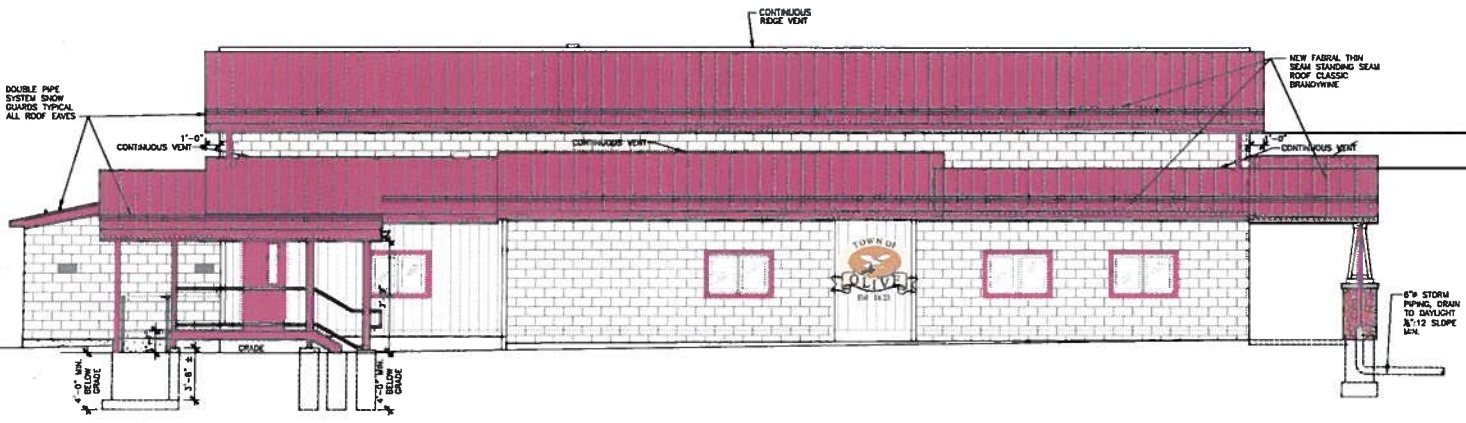


1 NORTH ELEVATION  
SCALE: 1/4"=1'-0"



2 EAST ELEVATION  
SCALE: 1/8"=1'-0"

- EXTERIOR FINISH INFORMATION:**
- 22 GAUGE THIN SEAM (1-3/8") STANDING SEAM STEEL ROOF PANEL, 12" WIDE PANELS, COLOR TO MATCH FABRIL BRANDYWINE.
  - SNOW GUARDS DOUBLE PIPE STYLE, PAINTED TO MATCH ROOF.
  - FIBER-CEMENT SIDING WITH VERTICAL WOOD GRAIN PATTERN, COLOR TO MATCH JAMES HARDIE HAVILDO RIDGE.
  - EXTERIOR DOOR COLOR TO MATCH ROOF COLOR.
  - WINDOW TRIM - PLYGEM OR EQUIVALENT, PAINT TO MATCH ROOF COLOR.
  - MASONRY PAINTING - SW LOZOX SEALER, A-100 TOP COAT, OR EQUIVALENT, TOP COAT COLOR TO MATCH FIBER-CEMENT SIDING.
  - CABLE VENT, MD AMERICA, ALMOND (049).
  - GUTTER AND LEADER - ALUMINUM, COLOR TO MATCH ROOF.
  - STONE - SOUTH BAY QUARTZITE.

DOOR & HARDWARE SCHEDULE							MANUFACTURER: STEELCRAFT OR EQUAL		
TAG	SIZE	TYPE	CLOSING DEVICE	EXIT DEVICE	OTHERS	NOTES			
			MFR/MODEL	FINISH	MFR/MODEL	TRIM KIT	FINISH		
D1	3'-0" x 6'-8"	STEELCRAFT 118 SERIES FULL FLUSH STEEL DOOR FOR EXTERIOR USE	LDH 4040XP W/ PARALLEL ARM MOUNT AND DELAYED ACTION CLOSER (4041)	ALMA (A25)	SDR42E L5002 GRADE1 WOODRIDGE LOCK		SDR 9975 SERIES PANIC HARDWARE W/ 17 LEVER	<p>34" WIDE, 1 1/2" INSULATED STEEL DOOR W/ N LITE, REINFORCED FOR HARDWARE AS REQUIRED. SWING SHALL BE AS SHOWN ON THE PLANS. FRAMES AND DOORS SHALL BE PAINTED TO MATCH ROOFING.</p> <p>PROVIDE STEEL FRAMES, SS HINGES AND ALL HARDWARE NECESSARY FOR A COMPLETE, 90 MINUTE FIRE RATED ASSEMBLY.</p>	

- GENERAL NOTES:**
- EXISTING CMU TO BE CLEANED. REMOVE ALL DIRT, DUST, GREASE, OIL, LOOSE PARTICLES, LANTACE, FOREIGN MATERIAL, AND PEELING OR DEFECTIVE COATINGS. PATCH AND RE-POINT WHERE CMU HAS BEEN DISTURBED.
  - ENTIRE SURFACE TO BE THOROUGHLY DRY.
  - PAINT ENTIRE CMU FACADE WITH SW LOZOX CONCRETE AND MASONRY PRIMER AND SW A-100 EXTERIOR LATEX PAINT, OR EQUIV. COLOR TO MATCH HANGPLANK SIDING.

REV #	DATE	REMARKS	ISSUE #	DATE	ISSUED FOR:

REFERENCE SCALE: 1"=10'-0"

UNAUTHORIZED ALTERATION OR ADDITION TO A PLAN BEARING A LICENSED PROFESSIONAL ENGINEER'S SEAL IS A VIOLATION OF SECTION 7209, SUB-DIVISION 2 OF THE N.Y. STATE EDUCATION LAW.

**FELLENZER ENGINEERING LLP**

22 Mulberry St, Suite 2A, Middletown, NY 13440  
1145-645-1441 or 845-443-8884

181 Church St, Suite 120, Poughkeepsie, NY 12501  
1045-654-6704 or 855-320-8700

JOHN D. FELLENER, P.E.

TOWN OF OLIVE FACILITIES REHABILITATION  
45 WATSON HOLLOW ROAD

ARCHITECTURAL ELEVATIONS

DESIGNED BY: JDF  
DATE: 5-28-17

PROVIDED BY: JDF  
DATE: AS SHOWN

APPROVED BY: JDF  
DATE: 10-31

PROJECT TAG: A-103  
PAGE 5 OF 15